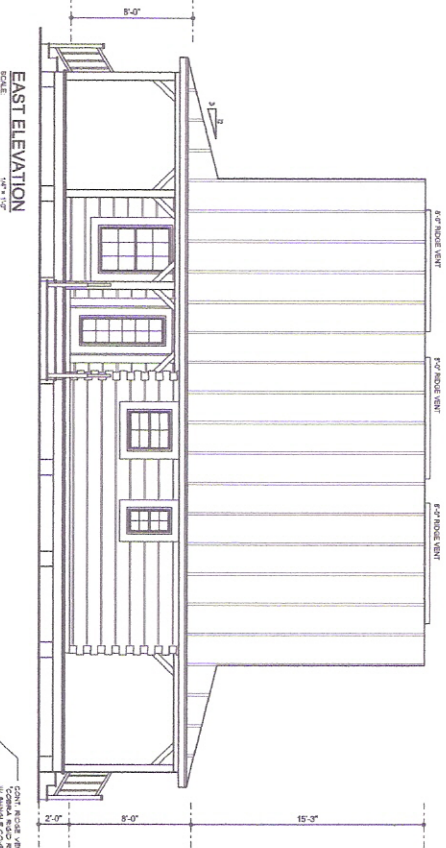
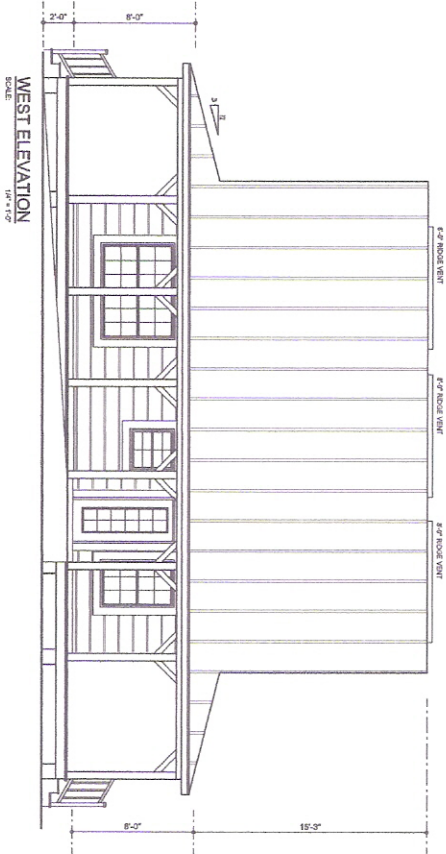
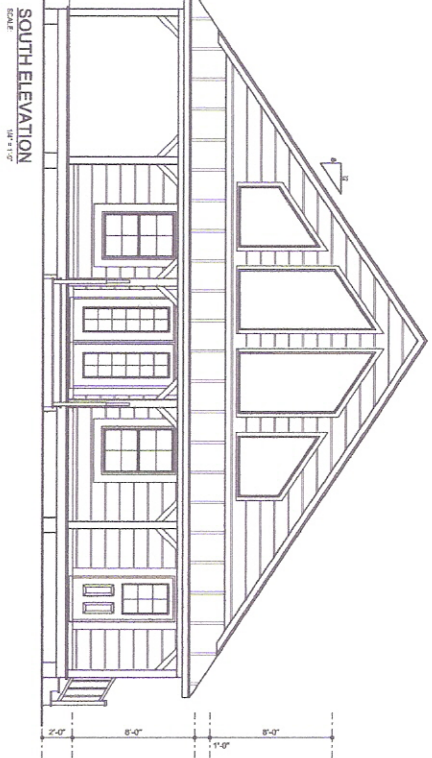
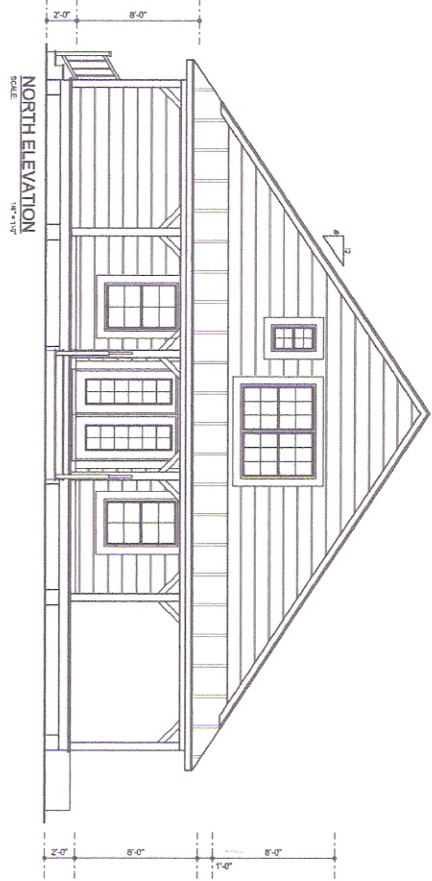


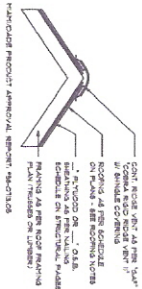
School House II



ITEM #	DESCRIPTION	QTY	UNIT	PRICE	TOTAL
1001	LOG CAB	1	SQ FT	10000.00	10000.00
1002	LOG CAB	1	SQ FT	10000.00	10000.00
1003	LOG CAB	1	SQ FT	10000.00	10000.00
1004	LOG CAB	1	SQ FT	10000.00	10000.00
1005	LOG CAB	1	SQ FT	10000.00	10000.00
1006	LOG CAB	1	SQ FT	10000.00	10000.00
1007	LOG CAB	1	SQ FT	10000.00	10000.00
1008	LOG CAB	1	SQ FT	10000.00	10000.00
1009	LOG CAB	1	SQ FT	10000.00	10000.00
1010	LOG CAB	1	SQ FT	10000.00	10000.00

Ridge Vent Detail

SCALE: 3/4" = 1'-0"



DESIGNED BY:
**WILLI
 MYE
 DESH**
 7030 N. WILSON RD. #1
 TAMPA, FL 33634
 (386) 758-84

A CUSTOM LOG HOME, FOR:
BURNS RESIDENCE
 PROJECT ADDRESS: 14715 SW 26TH PLACE, BONNISWORTH (ALACHUA COUNTY)

LOG PACKAGE SUPPLY
 CRACKER
 STYLE
 LOG HOMES
 Highway 27, Williston, Florida
 info@crackerstyleloghomes.com

REVISIONS

JOB NUMBER
 070407
 DRAWING NUMBER
A.1
 OF 4 SHEETS

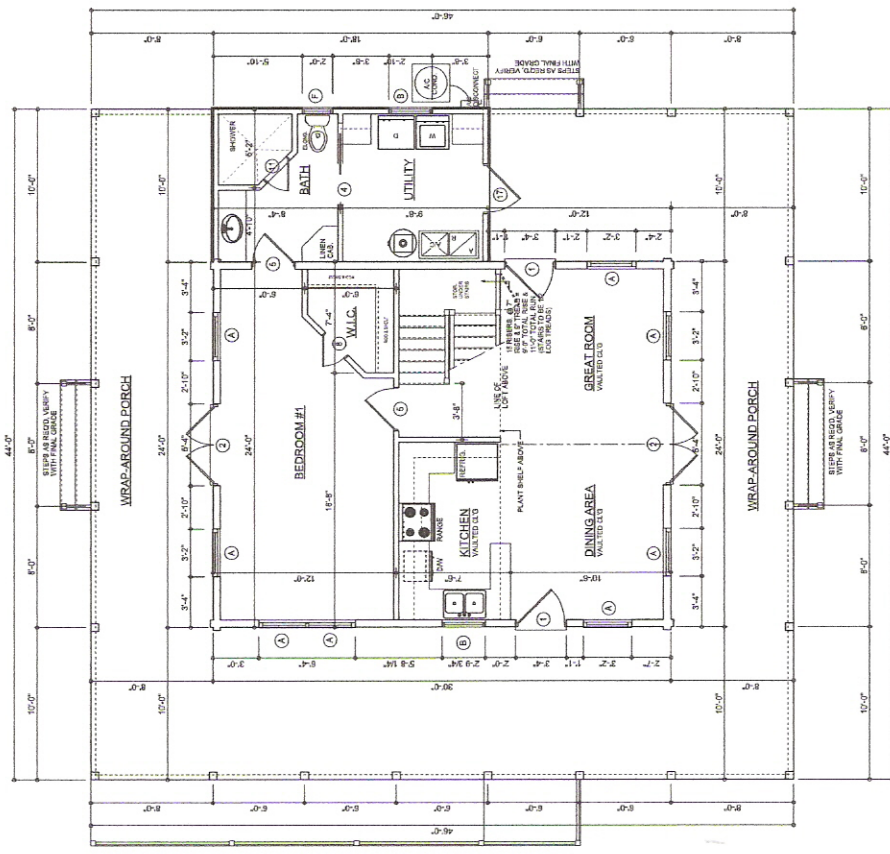
DOOR NUMBER	DOOR		REMARKS	SILING STYLE	
	SIZE	LOS WALL OPENING		HEIGHT	STYLE
1	3'-0" x 8'-0"	3'-4"	INTERIOR DOOR		
2	3'-0" x 8'-0"	8'-4"	EXTERIOR TERRAZZO SUBSTITUTION OR EQUAL		
3	3'-0" x 8'-0"	8'-4"	EXTERIOR TERRAZZO SUBSTITUTION OR EQUAL		
4	3'-0" x 8'-0"	N/A	INTERIOR DOOR		
5	3'-0" x 8'-0"	N/A	INTERIOR DOOR		
6	3'-0" x 8'-0"	8'-4"	EXTERIOR TERRAZZO SUBSTITUTION OR EQUAL		
7	3'-0" x 8'-0"	8'-4"	EXTERIOR TERRAZZO SUBSTITUTION OR EQUAL		
8	3'-0" x 8'-0"	N/A	INTERIOR DOOR		
9	3'-0" x 8'-0"	N/A	INTERIOR DOOR		
10	3'-0" x 8'-0"	N/A	GLASS BLOCK DOOR		
11	3'-0" x 8'-0"	N/A	GLASS BLOCK DOOR		
12	3'-0" x 8'-0"	N/A	GLASS BLOCK DOOR		
13	3'-0" x 8'-0"	N/A	GLASS BLOCK DOOR		
14	3'-0" x 8'-0"	6'-11 1/2"	EXTERIOR TERRAZZO SUBSTITUTION OR EQUAL		
15	3'-0" x 8'-0"	N/A	INTERIOR DOOR		
16	3'-0" x 8'-0"	N/A	INTERIOR DOOR		
17	3'-0" x 8'-0"	8'-4"	EXTERIOR TERRAZZO SUBSTITUTION OR EQUAL		

AREA SUMMARY

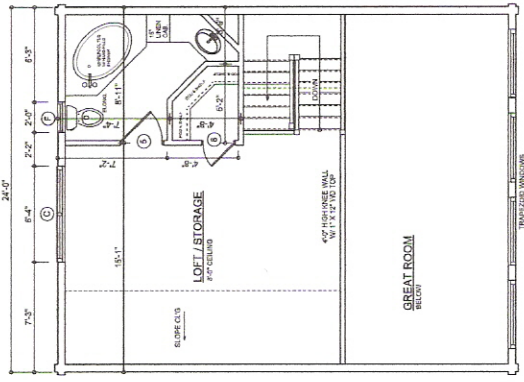
LIVING AREA 903 S.F.
LOFT / STORAGE RM. 415 S.F.
COVERED PORCH AREA 1121 S.F.
TOTAL AREA 2439 S.F.

WINDOW SCHEDULE

QTY	MARK	MODEL NO.	FRAME SIZE	ROUGH OPENING	LOS WALL OPENING	MATERIAL	MANUFACTURE
N/A	A	388 2H	3'-0" x 4'-0"	3'-0" x 4'-0"	3'-0" x 4'-0"	WOOD INTERIOR	PELLA
N/A	B	388 2H	3'-0" x 2'-0"	3'-0" x 2'-0"	3'-0" x 2'-0"	WOOD INTERIOR	PELLA
N/A	C	388 2H	3'-0" x 4'-0"	3'-0" x 4'-0"	3'-0" x 4'-0"	WOOD INTERIOR	PELLA
N/A	D	404	4'-0" x 4'-0"	4'-0" x 4'-0"	4'-0" x 4'-0"	GLASS BLOCK	PELLA
N/A	E	302 227	3'-0" x 2'-0"	3'-0" x 2'-0"	3'-0" x 2'-0"	WOOD INTERIOR	PELLA
N/A	F	388 2H	3'-0" x 4'-0"	3'-0" x 4'-0"	3'-0" x 4'-0"	WOOD INTERIOR	PELLA
N/A	G	388 2H	3'-0" x 2'-0"	3'-0" x 2'-0"	3'-0" x 2'-0"	WOOD INTERIOR	PELLA
N/A	H	388 2H	3'-0" x 4'-0"	3'-0" x 4'-0"	3'-0" x 4'-0"	WOOD INTERIOR	PELLA
N/A	I	388 2H	3'-0" x 4'-0"	3'-0" x 4'-0"	3'-0" x 4'-0"	WOOD INTERIOR	PELLA



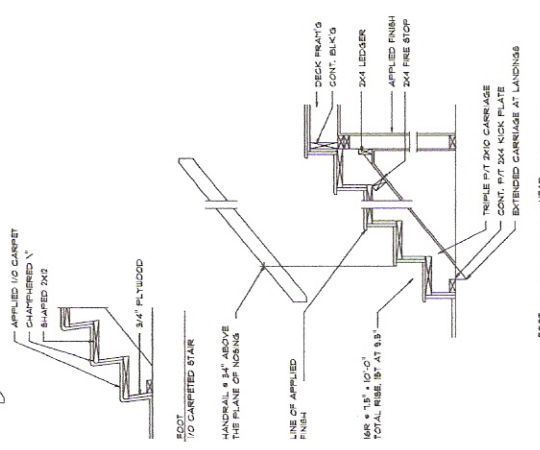
FLOOR PLAN
SCALE: 1/8" = 1'-0"



LOFT / STORAGE ROOM
SCALE: 1/8" = 1'-0"

NOTE: 1. ALL DIMENSIONS ARE TO FACE UNLESS NOTED OTHERWISE.
2. ALL WALL OPENINGS ARE TO BE CO-1 (1" MINIMUM) FOR DOOR FRAME OPENINGS (S&G).
3. SEE SCHEDULE FOR WINDOW AND DOOR SIZES.
4. SEE SCHEDULE FOR WINDOW AND DOOR SIZES.
5. SEE SCHEDULE FOR WINDOW AND DOOR SIZES.

MINI SYMBOLS:
1 - FINISH
2 - FINISH
3 - FINISH
4 - FINISH
5 - FINISH



TYPICAL STAIR DETAILS
SCALE: 1/8" = 1'-0"