



RIGHT ELEVATION

1/4" = 1'-0"

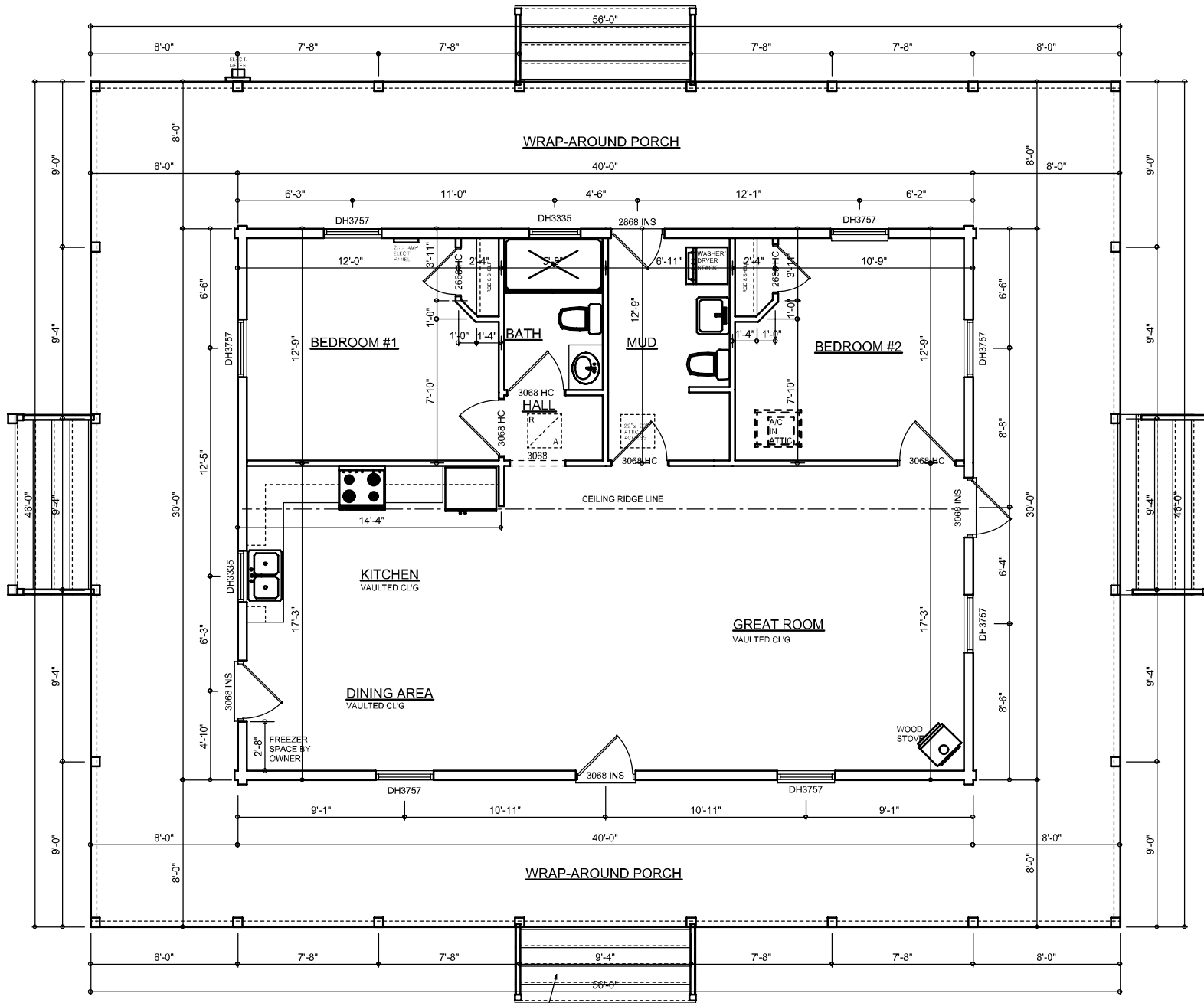
SCALE:



LEFT ELEVATION

SCALE:

1/4" = 1'-0"



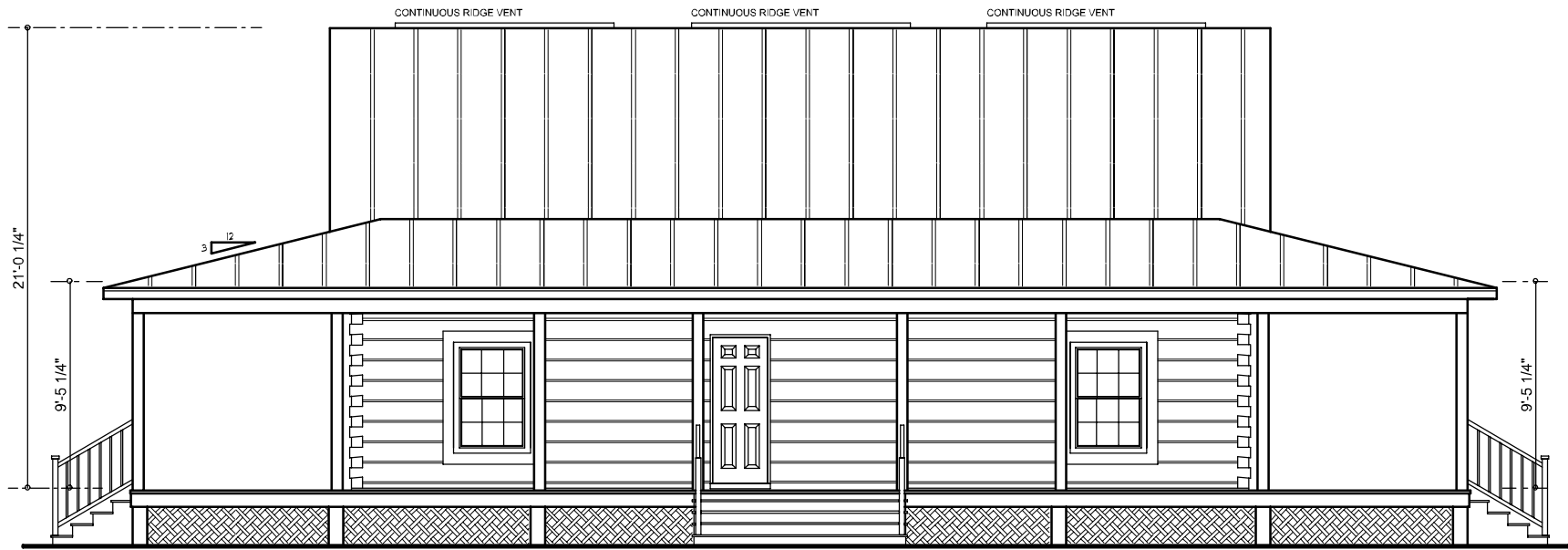
FLOOR PLAN

SCALE: 1/4" = 1'-0"
 NOTE: ALL CEILING HEIGHTS SHALL BE 9'-0" UNLESS OTHERWISE NOTED

12" WIDE TREADS, 6.4" RISERS
 = TOTAL 32" RISE

AREA SUMMARY

LIVING AREA	1200	S.F.
PORCH AREA	1376	S.F.
TOTAL AREA	2576	S.F.



REAR ELEVATION
SCALE: 1/4" = 1'-0"



FRONT ELEVATION
SCALE: 1/4" = 1'-0"